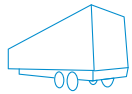


## BEST-IN-CLASS COVERAGE



TRUCK



TRAILER



BUS/COACH



PICKUP



VAN

CUMMINS, FREIGHTLINER,  
INTERNATIONAL, VOLVO/MACK,  
CAT, PACCAR, KENWORTH,  
ISUZU, HINO, FUSO, GM, FORD,  
MERCEDES, SCANIA, MAN,  
VOLKSWAGEN...

Scan and let's talk!



Cojali USA, Inc.  
2200 NW 102nd Avenue #4b  
Doral, FL 33172, USA

Tel.: +1 (305) 960-7651  
Toll free: 1-800-975-1865  
Mexico: +52-5546312236  
[customersupport@jaltest.com](mailto:customersupport@jaltest.com)

[jaltest.com](http://jaltest.com)  
[cojaliusa.com](http://cojaliusa.com)

2022 V.1 EN

## ALSO AVAILABLE DIAGNOSTICS FOR:



AGV



OFF-HIGHWAY



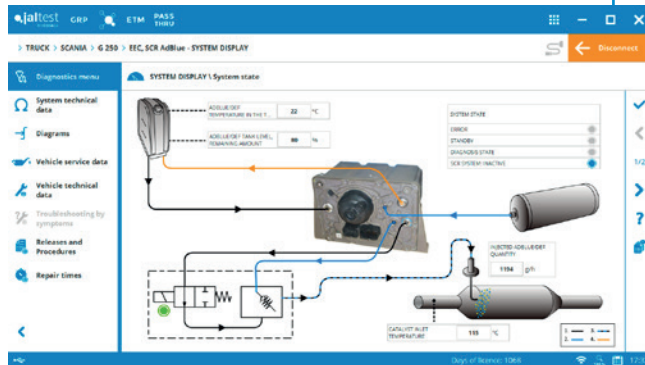
MHE



MARINE

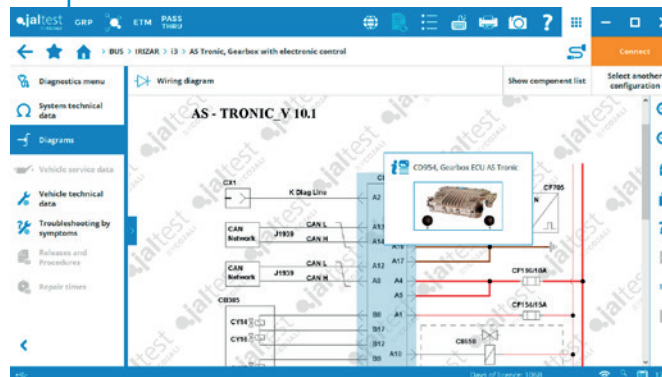
# MULTIBRAND DIAGNOSTICS

- Diagnostics for heavy/light commercial vehicles, trailer/semi-trailer and buses/coach.
- Automatic detection of systems and error codes.
- Real-time live data monitoring.
- Actuation and calibration of components.
- Parameterisations.
- Reading of vehicle's operating time and consumption.



# TECHNICAL INFORMATION

- System technical data (engine, transmission, brakes...).
- Interactive wiring diagram.
- Technical releases.
- Troubleshooting by symptoms and fault codes troubleshooting.
- Maintenance data.
- Vehicle technical data (engine type...).



# JALTEST GRP: WORKSHOP MANAGEMENT SOLUTIONS

- Customer portfolio.
- Database synchronisation between different devices, within the same workshop, with data backups on external servers.
- Workshop task management.
- Diagnostics, maintenance and tasks management and reporting.
- Customisation of new brands and vehicle models.
- Access to the history of the vehicle.

# INTUITIVE & EASY TO USE TECHNICAL SUPPORT TRAINING